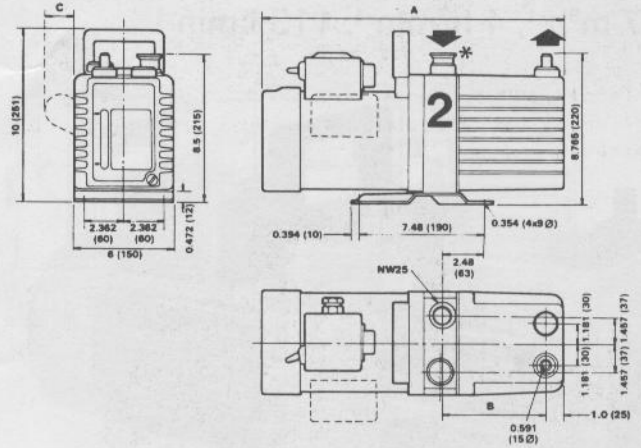
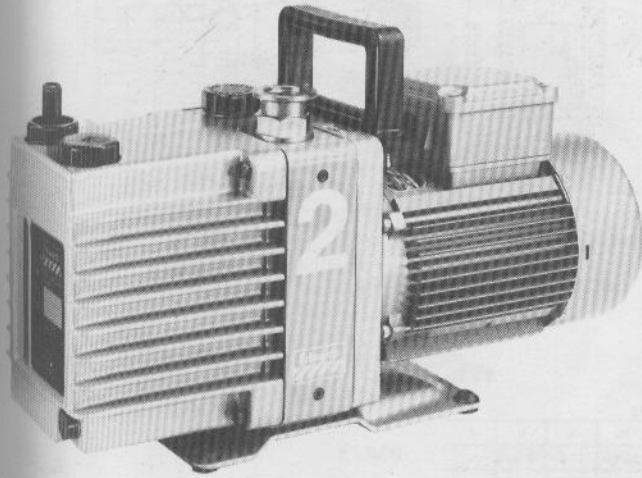


EDWARDS

E2M2 double stage

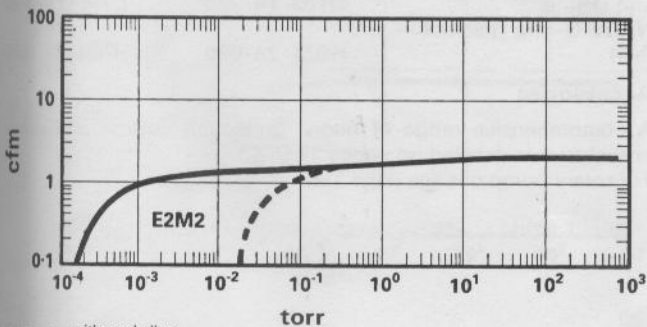
3.4 m³h⁻¹, 2 ft³min⁻¹, 57 l min⁻¹



ph	Hz	A	B	C
1	50/60	17.8	5.16	-
3	60	16.6	5.16	-
1	60	16.6	5.16	1.8

Technical Data

	E2M2
Displacement (swept volume) 60 Hz	2 cfm
Speed (Pneurop) 60 Hz	1.7 cfm
Ultimate vacuum	
without gas ballast (partial pressure)	1.9×10^{-4} torr
without gas ballast (total pressure)	0.75×10^{-4} torr
with gas ballast (partial pressure)	2.25×10^{-2} torr
Inlet connection	NW25 flange with 15 mm nozzle alternative
Outlet connection	Nozzle 15 mm external diameter. Hole tapped $\frac{3}{8}$ in BSP
Maximum inlet pressure for water vapor	15 torr
Maximum water vapor pumping rate	0.07 lb h ⁻¹
Weight	40 lb
Motor 60 Hz	0.25 kW
Oil capacity—maximum	0.55 litre
minimum	0.35 litre
Recommended Edwards oil	Supergrade A



--- with gas ballast
— without gas ballast

Product description

Pump 115 or 230 V 1.ph 50/60 Hz
Pump 208/230/460 V, 3.ph 50/60 Hz
Vibration isolators (set of four)

Ordering number

A360-01-981
A360-01-982
A248-01-404

(Supergrade A oil, NW O-ring and centring ring, inlet nozzle, two Allen keys and spare seals for oil drain and filler plugs supplied with each pump)

Exchange/replacement service available

Spares

Maintenance kit comprising blades, springs, seals, gaskets, filters and washers
Seals kit
NW25 centring ring and O-ring
NW25 O-ring (pack of five)

A360-01-800
A341-01-820
C105-14-396
H021-24-035

Accessories

A comprehensive range of filters, protection devices and other accessories is detailed on pages 32 to 43
For rotary pump oils see page 195